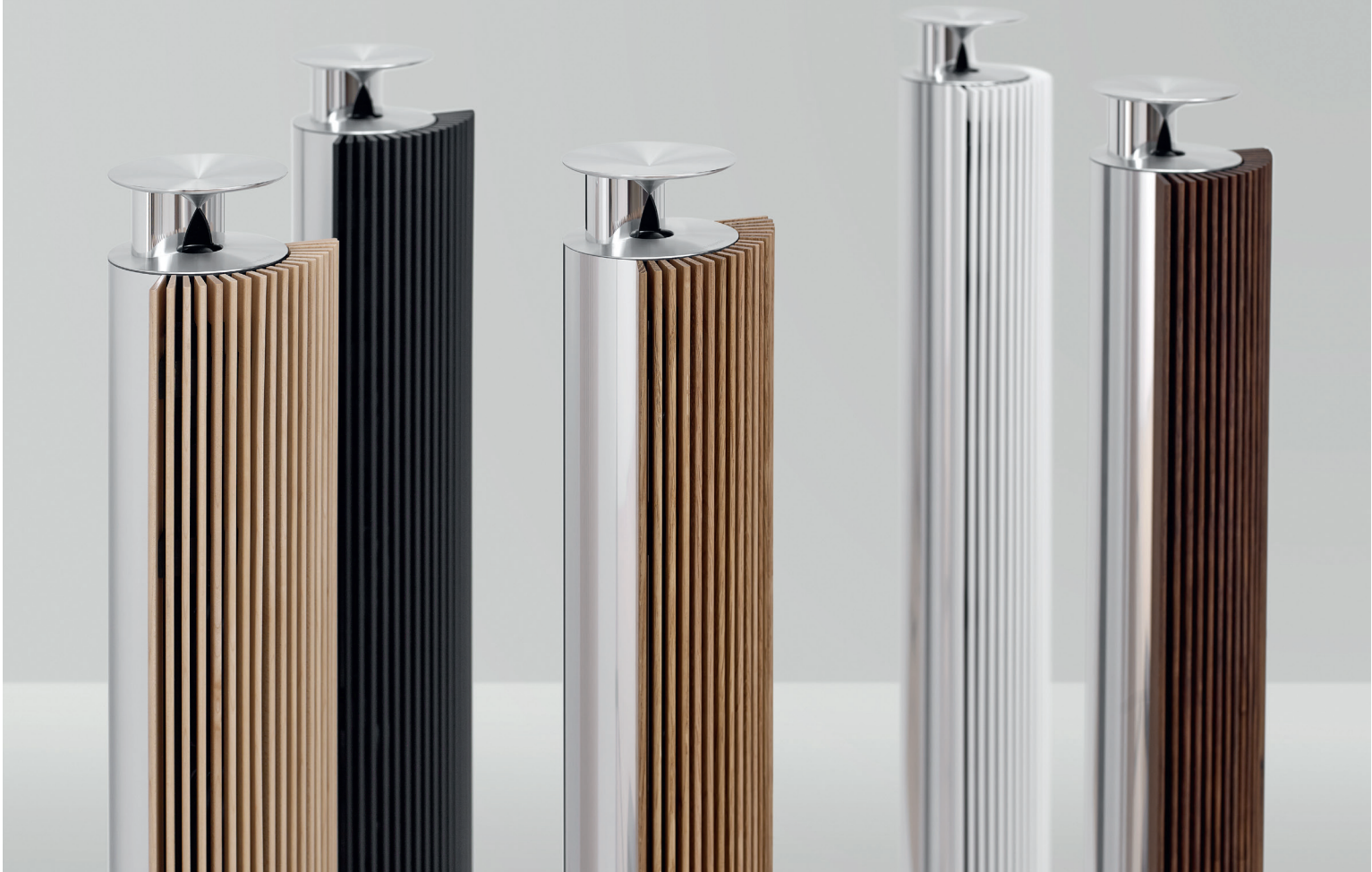


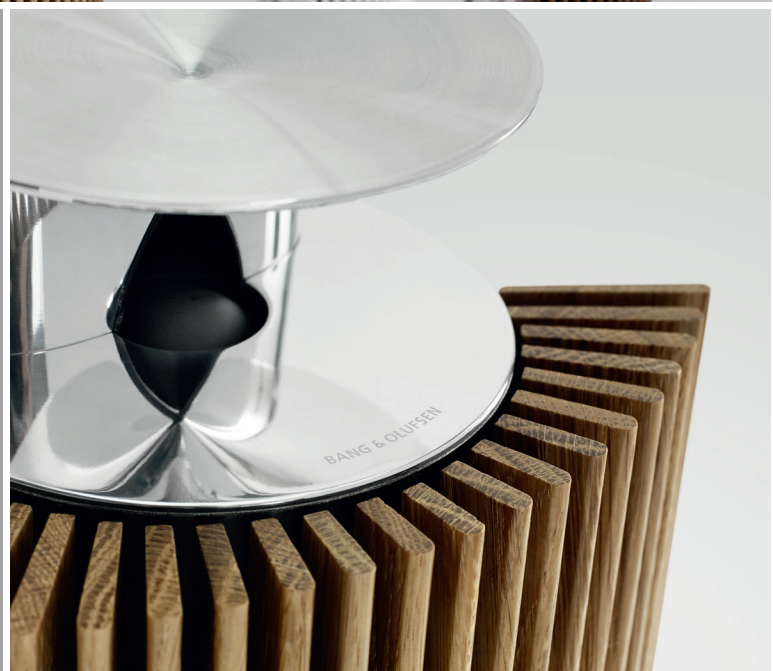
BEOLAB 18

Iconic design with great sound



AN ACOUSTIC ARTWORK

Conceived as an exceptional sound column, the BeoLab 18 loudspeakers introduce a refined symbiosis of form, craftsmanship and performance. Crafted from exquisite materials with uncompromising attention to detail, and inspired by the legendary BeoLab 8000 loudspeaker, it honours a classic silhouette with new heights of performance also featuring Immaculate Wireless Sound. A BeoLab 18 set-up requires just a single power cable to each speaker, giving you incredible flexibility to unleash multi-channel wireless audio throughout your room.

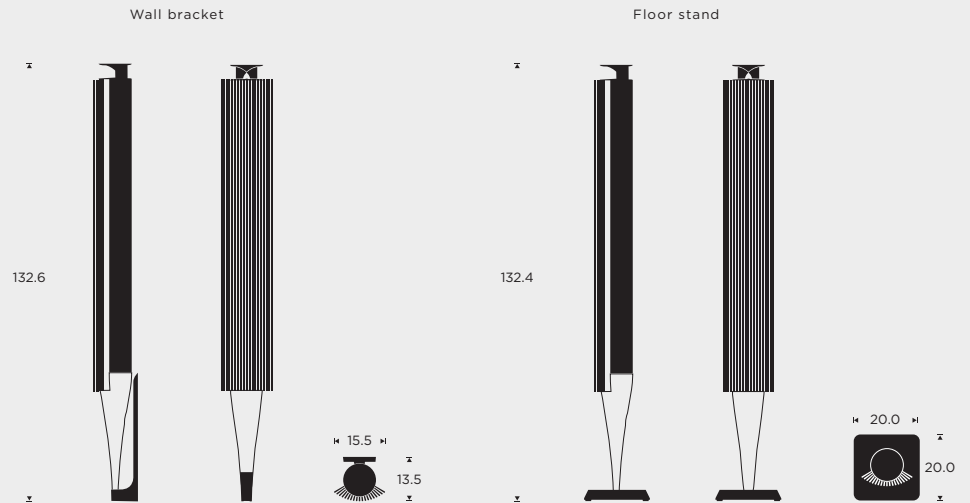


BANG & OLUFSEN

MEASUREMENTS

in cm

bang-olufsen.com/beolab18



SPECIFICATIONS

Designer	Placement options	Weight
Torsten Valeur, David Lewis Designers	Wall bracket or floor stand	8.5 kg
Drivers	Amplifiers	Wireless compatibility
1 x 3/4" tweeter 2 x 4" woofer	160 watt, Class D, tweeter 160 watt, Class D, woofer	BeoVision 11, BeoVision 14, BeoVision Avant, BeoSound Moment, BeoLab Transmitter 1, and any WiSA-compliant TV or AV system.

Customisation options

Lamellas					
	Maple	Smoked oak	Walnut	Black	White
Aluminium cabinet					
	Natural	Black	Brass tone		
Wall bracket: Natural and black Floor stand: Black					
	Natural	Black			

FEATURES

Acoustic Lens Technology (ALT)

The benefit of ALT is a 180-degree horizontal dispersion of the upper frequencies, leading to uniform sound characteristics in the area in front of the loudspeaker allowing you to place yourself more freely and still get an optimal experience.

Adaptive Bass Linearisation (ABL)

Continuously adapts the bass response to the input signal, resulting in a significantly improved bass performance, without the risk of damaging the driver.

Room adaptation

A three-position switch controls the bass response of the speaker depending on the placement of the speaker in the room.

Thermal protection

The temperature of the driver units is constantly monitored to keep the speaker at top performance all the time.

Line sense

Auto on/off - for connecting non-Bang & Olufsen equipment.

Connections

- 2 x Power Link (RJ45)
- 1 x RCA (L/R)
- 1 x TOSLINK
 - in: Sample rate 32k, 44.1k, 48k, 96k/PCM16-24 bit
 - out: Sample rate 48k/PCM 24 bit
- Wireless Power Link